



Comparison of rubber gaskets

Product name

TOMBO No.

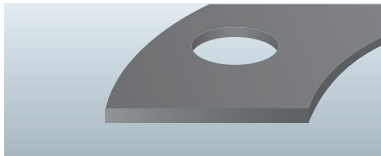
1050/1051

Rubber cut gaskets



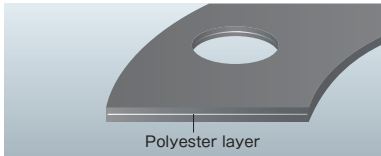
TOMBO No.1050

This gasket is formed by cutting a rubber sheet into the shape of a gasket.



TOMBO No.1051

This gasket is formed by cutting a rubber sheet reinforced with polyester layer into the shape of a gasket.



Construction

Features

- This gasket utilizes the elasticity, restoring ability and fitting ability of rubber to realize good sealing performance under low contact pressure.

* Because TOMBO No.1051 is reinforced with a polyester layer, the protrusion from the flange is small. However, this gasket is not suitable as a gas seal, because leakage due to permeation is liable to occur.

Service range

Service temperature range Depends upon the rubber material.

Maximum service pressure 1.0MPa

Lineup

TOMBO No.1050

-NBR (nitrile rubber), -CR (chloroprene rubber), -EP (ethylene propylene rubber), -IIR (butyl rubber), -SI (silicone rubber), -FA & -FS (fluorine rubber), -NR (natural rubber), -ZR (hydrogen-added nitrile rubber), -PF (perfluoro rubber)

TOMBO No.1051-NBR,-CR,-NR

For details of the service temperature and standard dimensions, see P.56.

TOMBO No.

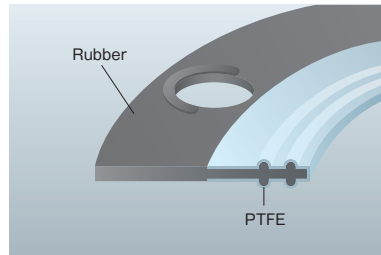
9013/9013-D

EBILON™ gasket



 Conforms to the Standards and criteria for food and food additives, etc. (3-D-2. Public Notice No. 370 of the Ministry of Health & Welfare, 1959) stipulated by the Food Sanitation Act
* This applies to PTFE film used on the face that is in contact with the fluid.

This gasket consists of a rubber core integrated with a pressurized and heat-formed PTFE film.



- This gasket combines the elasticity of rubber with the corrosion resistance of PTFE, resulting in excellent sealing performance.
- It is ideal for PVC pipes, glass-lined pipes and other applications where a large tightening force cannot be applied.

Service temperature range -30 - 150°C

Maximum service pressure 2.0MPa

Flange shape Full face

TOMBO No.9013

Consists of EPDM covered with PTFE.

TOMBO No.9013-D

Consists of special EPDM for an electrolytic tank. Covered with PTFE.

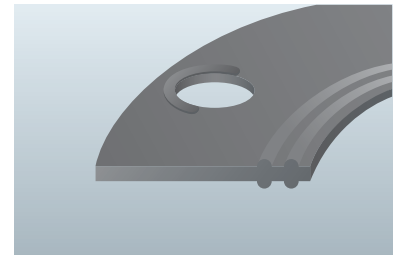
TOMBO No.

9013-EP/-DEP

EBILON™ gasket



Rubber gasket pressure-formed to the shape shown below.



- This gasket realizes stable sealing performance under a lower contact pressure than that of a rubber cut gasket.

* This gasket is recommended for use at places where the service conditions are not harsh, and there is not much need for chemical resistance.

Service temperature range -30 - 150°C

Maximum service pressure 1.0MPa

Flange shape Full face

TOMBO No.9013-EP

EPDM

TOMBO No.9013-DEP

Special EPDM for an electrolytic tank

For details of standard dimensions, see P.56.